



# TRI-R DIESEL-DRIVEN COMPONENTS



## STROMAG TRI-R COUPLING

The TRI-R Coupling is particularly suitable for resiliently mounted engines. The elasticity of the ring element is determined by the rubber composition. The axial rigidity is adjustable by the perforated diaphragm.

### Applications:

Generator systems, marine main and auxiliary drives

For more information about our flexible couplings visit

[www.stromag.com](http://www.stromag.com)

## FEATURES

### Combination of ring element with diaphragm

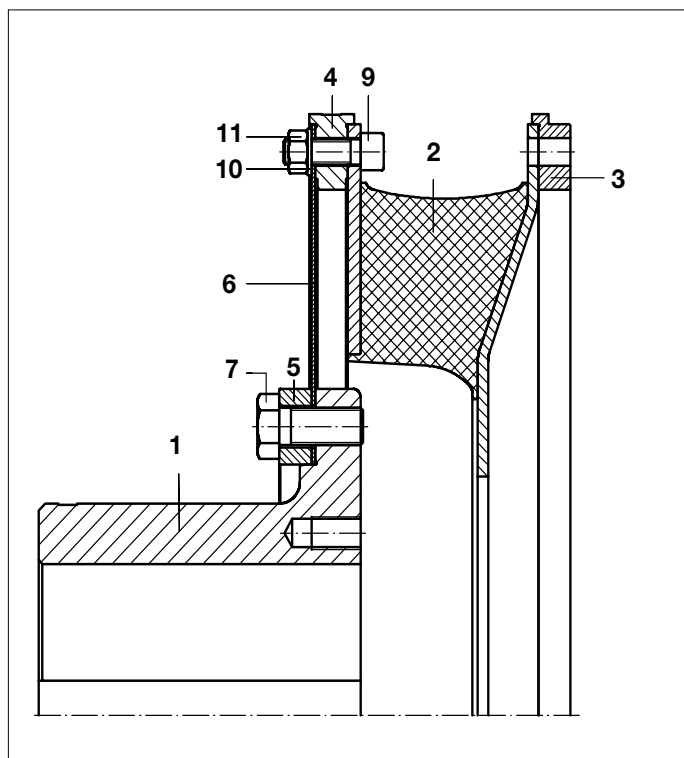
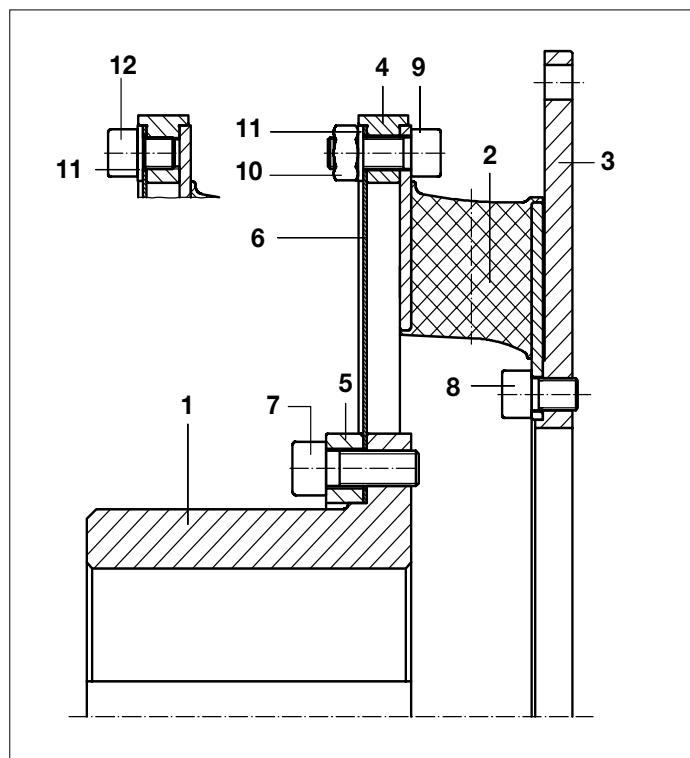
The diaphragm assures additional axial flexibility

### Different stiffnesses

Multi-row combinations of ring elements are possible

### Classification regulations

The coupling meets the requirements of directive 94/9/EG (ATEX 95)



The delivery extent of the Stromag TRI-R Coupling in standard execution comprises:

- |                       |                   |                      |
|-----------------------|-------------------|----------------------|
| 1 = Hub               | 4 = Center ring   | 7, 8, 9, 10 = Screws |
| 2 = Ring element      | 5 = Pressure ring | 11 = Nut             |
| 3 = Connection flange | 6 = Diaphragm     | 12 = Washer          |

Coupling size	Nominal Torque	Max. Torque	
	T <sub>KN</sub> [Nm]	T <sub>Kmax1</sub> [Nm]	T <sub>Kmax2</sub> [Nm]
<b>311 R</b>	1,150	1,700	3,400
<b>312 R</b>	1,350	2,000	4,000
<b>313 R</b>	1,950	2,900	580
<b>321 R</b>	1,650	2,500	5,000
<b>322 R</b>	1,950	2,900	5,800
<b>323 R</b>	2,350	3,500	7,000
<b>411 R</b>	2,550	3,800	7,600
<b>412 R</b>	4,000	6,000	12,000
<b>413 R</b>	–	–	–
<b>421 R</b>	3,600	5,400	10,800
<b>422 R</b>	5,200	7,800	15,600
<b>423 R</b>	–	–	–
<b>511 R</b>	4,350	6,500	1,300
<b>512 R</b>	6,650	10,000	20,000
<b>513 R</b>	–	–	–
<b>521 R</b>	8,550	12,800	25,600
<b>522 R</b>	14,800	22,200	44,400
<b>523 R</b>	–	–	–
<b>641 R</b>	16,000	24,000	48,000
<b>642 R</b>	16,000	24,000	48,000
<b>643 R</b>	16,000	24,000	48,000
<b>741 R</b>	20,000	30,000	60,000
<b>742 R</b>	20,000	30,000	60,000
<b>743 R</b>	20,000	30,000	60,000
<b>841 R</b>	25,000	37,500	75,000
<b>842 R</b>	25,000	37,500	75,000
<b>843 R</b>	25,000	37,500	75,000
<b>941 R</b>	31,500	47,250	94,500
<b>942 R</b>	31,500	47,250	94,500
<b>943 R</b>	31,500	47,250	94,500
<b>1041 R</b>	40,000	60,000	120,000
<b>1042 R</b>	40,000	60,000	120,000
<b>1043 R</b>	40,000	60,000	120,000
<b>1141 R</b>	50,000	75,000	150,000
<b>1142 R</b>	50,000	75,000	150,000
<b>1143 R</b>	50,000	75,000	150,000
<b>1241 R</b>	63,000	94,750	189,000
<b>1242 R</b>	63,000	94,750	189,000
<b>1243 R</b>	63,000	94,750	189,000

## Stromag Facilities

### Europe

#### Germany

Hansastraße 120  
59425 Unna - Germany  
+49 (0) 23 03 102 0

*Clutches & Brakes, Couplings,  
Geared Cam Limit Switches, Discs*

Dessauer Str. 10  
06844 Dessau-Roßlau - Germany  
+49 (0) 340 2190 0

*Electromagnetic Clutches & Brakes*

#### France

Avenue de l'Europe  
18150 La Guerche sur L'Aubois - France  
+33 (0)2 48 80 72 72

*Disc Brakes & Drum Brakes*

#### Great Britain

Amphthill Road  
Bedford, MK42 9RD - UK  
+44 (0)1234 324347

*Electromagnetic Clutches & Brakes,  
Industrial Caliper Brakes*

### North America

#### USA

31 Industrial Park Road  
New Hartford, CT 06057 - USA  
860-238-4783

*Electromagnetic Clutches & Brakes*

300 Indiana Highway 212  
Michigan City, IN 46360 - USA  
219-874-5248

*Couplings*

2800 Fisher Rd.  
Wichita Falls, TX 76302 - USA  
940-723-3400

*Geared Cam Limit Switches,  
Industrial Caliper & Drum Brakes*

#### South America

##### Brasil

Avenida João Paulo Ablas, 2970  
Jardim da Glória, Cotia - SP,  
06711-250 - Brasil  
+55 (11) 4615-6300

*Flexible Couplings, Bearing  
Isolators, and Coupling Guards*

### Asia Pacific

#### China

T40B -5, No. 1765 Chuan Qiao Road  
Pudong 201206, Shanghai - China  
Tel +86 21-60580600

*Clutches & Brakes, Electromagnetic  
Clutches & Brakes, Couplings, Industrial  
Caliper & Drum Brakes, Discs, Geared  
Cam Limit Switches*

#### India

Gat No.: 448/14, Shinde Vasti, Nighoje  
Tal Khed, Pune- 410 501  
+91 2135 622100

*Clutches & Brakes, Electromagnetic  
Clutches & Brakes, Couplings, Industrial  
Caliper & Drum Brakes, Discs, Geared  
Cam Limit Switches, Wind Brakes*

### Renewable Energy

#### Denmark

Jernbanevej 9  
5882 Vejstrup  
+45 63 255 255

*Wind Brakes*



Scan to see all  
the brands of  
Regal Rexnord

Neither the accuracy nor completeness of the information contained in this publication is guaranteed by the company and may be subject to change in its sole discretion. The operating and performance characteristics of these products may vary depending on the application, installation, operating conditions and environmental factors. The company's terms and conditions of sale can be viewed at <http://www.altramotion.com/terms-and-conditions/sales-terms-and-conditions>. These terms and conditions apply to any person who may buy, acquire or use a product referred to herein, including any person who buys from a licensed distributor of these branded products.

©2023 by Stromag LLC. All rights reserved. All trademarks in this publication are the sole and exclusive property of Stromag LLC or one of its affiliated companies.