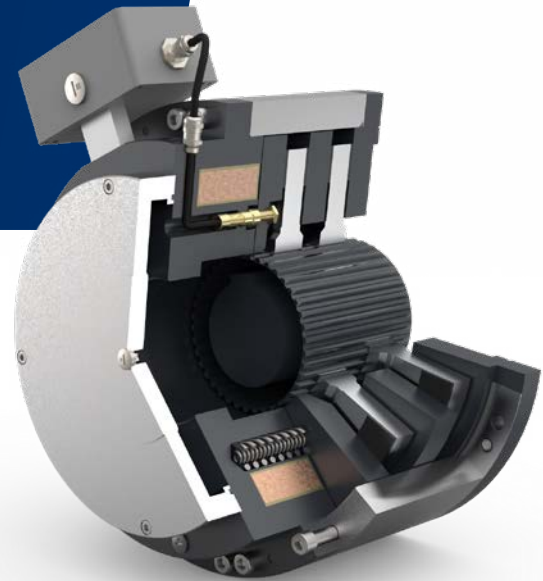


NFF4F-LS BRAKES

FOR SLOW-RUNNING HIGH TORQUE DRIVELINES



Electromagnetic Four-Face Spring-Applied Brake with a High Protection Against Harsh Environments

The Four-Face NFF4F-LS Brake has been developed for industrial and crane applications that require slow running drives with very high brake torque and closed design. With a compact design and high wear-resistance the brake ensures high durability.

APPLICATIONS

Cranes, conveyors, assembling lines, presses with electric torque motor drives, electric gearless drives and heavy industry.

BENEFITS INCLUDE

- Brake torque range 4,000 – 40,000 Nm
- Protection up to IP 66
- High brake torque in small space
- Four-face brake with closed design
- All components with special surface protection
- Simple assembly to motor, no brake disassembly required
- Concentricity through body for tacho fixing
- Free from restoring force when braking
- Robust, reliable design with very low inertia
- Excellent heat dissipation
- Sealed inspection holes for wear indication

MAIN FEATURES

Coil Body with coil	Thermal class 155, nitrocarburated and postoxidated
Outer Body	Manufactured in sea water proof aluminium with large inspection holes
Armature Plate	Special protection: nitrocarburated and postoxidated
Brake Flange	Special protection: nitrocarburated and postoxidated
Friction Lining	For high holding torque
End Cover	Manufactured in sea water proof aluminium with provision for standstill heater
Hub	Special protection: nitrocarburated and postoxidated
Connection cable	1 metre long
Seals	For high protection (IP66 in installed state)

www.stromag.com

Hansastraße 120 | 59425 Unna - Germany
+49 2303 102-0

P-8459-SG-A4 08/23