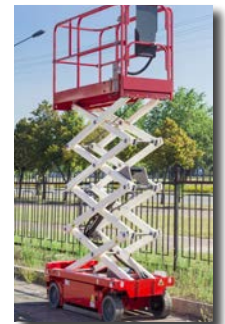
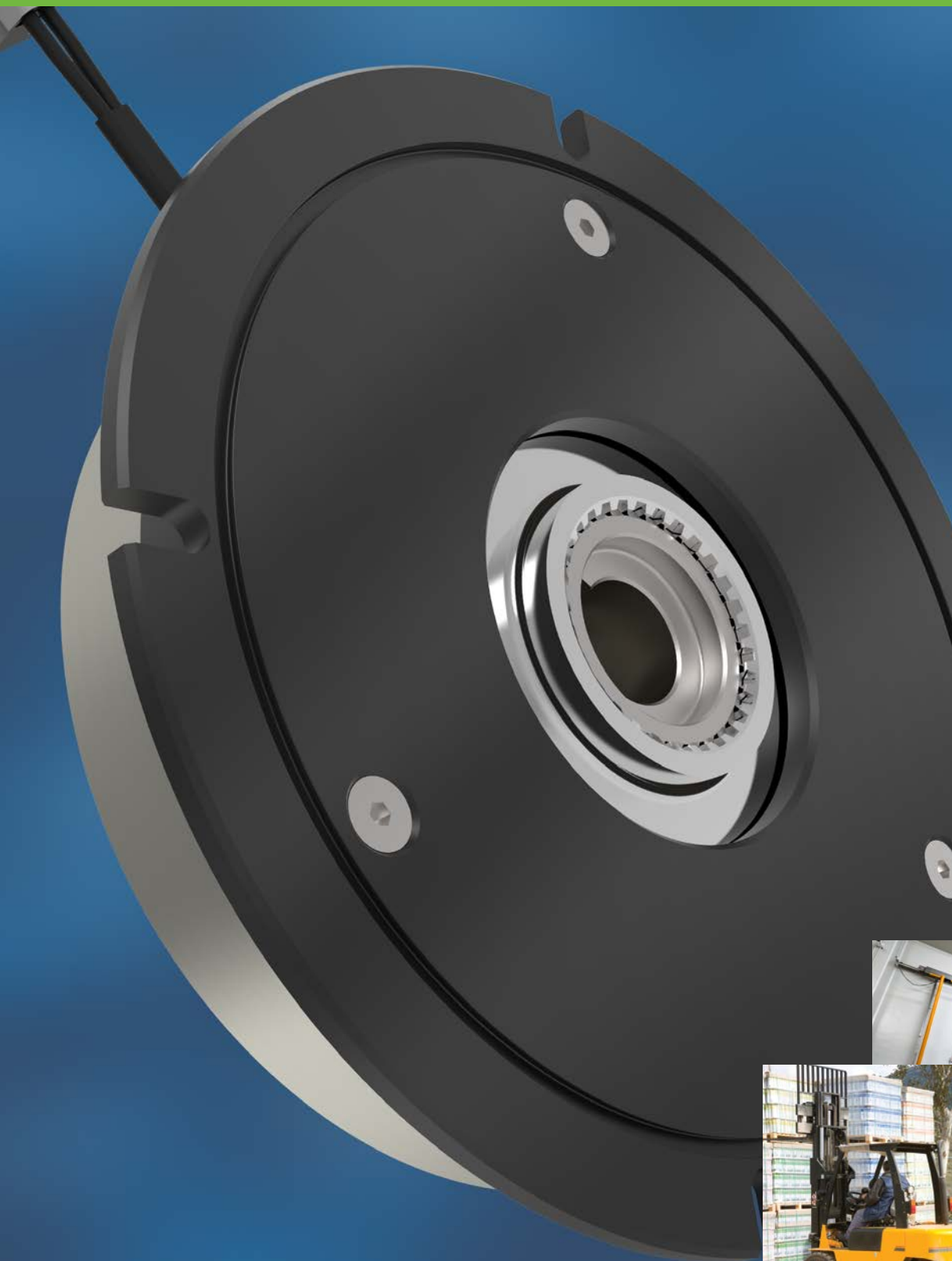


**Original
Compact,
Powerful
and Proven
PK Brake
Design
Leads the
Market**



THE ORIGINAL PK BRAKE...

A VERY THIN, POWERFUL AND PROVEN DESIGN

- Installed on more than 500,000 forklift trucks and aerial platforms in the field
- More than 30 key OEMs have adopted this solution since 2010
- Manufactured globally

Long service life with reduced power consumption

▼ Dual voltage coil/PWM control

Vehicle can be moved without power (due to drained batteries)

▼ Mechanical brake release by screw or lever available as an option

Advanced friction material technologies for extreme environments and high-speed, high-capacity braking applications

NEW Non-Stick Friction Material For cold room and outdoor environments

Regal Rexnord engineers have developed a proprietary friction material specifically-designed for cold room and outdoor environments with high moisture levels and wide temperature differentials. Most standard friction materials tend to get sticky.

Regal Rexnord'S new non-stick friction material has proven to retain stable torque during rigorous climate chamber and endurance testing, as well as extensive field testing. The new material is available on all PK Series motor brakes.

NEW W134 Non-Stick Friction Material For high-speed, high-energy applications

New W134 non-stick friction material can be fitted on the PK brake series for certain high-speed, high-energy conditions. Field testing showed that standard friction material was able to handle 15 x 25kJ at 4000 rpm. Testing proved that the new W134 material is able to handle up to 80 x 40kJ at 6000 rpm on the same size PK35.

Easy, reliable integration with vehicle's existing controller

▼ PK brakes can become CAN BUS ready with our embedded electronics

Compact size fits in limited vehicle space envelope

▼ Thin profile for easier axle integration

Reduced maintenance costs and downtime

NEW WES Contactless Monitoring System



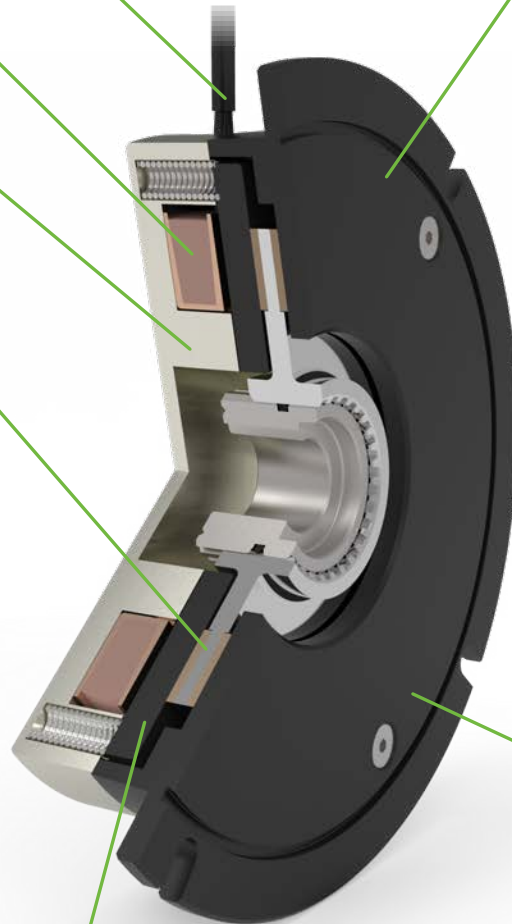
The WES monitoring solution provides reliable detection of the smallest strokes, especially on spring-applied brakes. Made without sensitive mechanical parts, it greatly outperforms electromechanical solutions in functional safety and lifecycle expectancy. Additionally, this contactless monitoring solution reports state and wear information.

Eliminates water ingress and corrosion issues

▼ Up to IP67 protective grade
NEW up to 500h of salt spray resistant coating

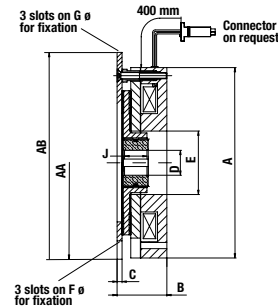
Increased stability eliminates harsh or strong braking

▼ Multi-step option to release torque on demand in gradual steps



OPEN SPRING-APPLIED MOTOR BRAKES

Parking and stopping standard brakes for indoor or enclosed applications

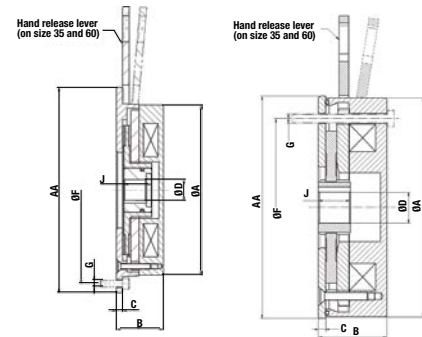


| Size | 005 | 010 | 020 | 035 | 060 | 100 |
|-------------------------|---|------------|------------|------------------|------------|------------|
| Static Torque (Nm)* | 9 | 21 | 40 | 70 | 125 | 200 |
| Static Torque (lb. ft)* | 6.6 | 15.5 | 29.5 | 51.6 | 92.2 | 147.5 |
| A | 82 | 96 | 133 | 153 | 164 | 184 |
| B | 41.5 | 39.7 | 43 | 43 | 59 | 75 |
| C | 3.2 | 3.2 | 4.5 | 6 | 6 | 10 |
| D | 10/15H7 | 15/20H7 | 15/20H7 | 19.05/20/25H7 | 20/25/30H7 | 25/30/35H7 |
| J | 18 | 20 | 20 | 25 | 30 | 30 |
| E | 31 | 28.5 | 43.5 | 51 | 59 | 70 |
| F | 72 (3xM4) | 90 (3xM5) | 112 (3xM5) | 132 (3xM5 or M6) | 145 (3xM8) | 170 (3xM8) |
| G | 90 (3xM5) | 112 (3xM5) | 132 (3xM5) | 145 (3xM6) | 170 (3xM8) | 196 (3xM8) |
| AA small Flange | 82 | 96 | 133 | 153 | 164 | 184 |
| AB large Flange | 100 | 115 | 138 | 178 | 185 | 215 |
| Ambient Temperature | Minus 20 Plus 60 Degree C | | | | | |
| Voltage | Pulse Width Modulation - based on customer requirements | | | | | |

* Minimum torque over the life of a brake based on High torque friction. Nominal torque can vary depending on the friction grade selected for the application.

ENCLOSED SPRING-APPLIED MOTOR BRAKES

Parking and stopping standard brakes for outdoor applications



| Size* | 05 Captive | 010 Captive | 020 Captive | 035 Captive | 060 Captive |
|-------------------------|---|-------------|-------------|---------------|-------------|
| Static Torque (Nm) | 9 | 21 | 38 | 50 | 165 |
| Static Torque (lb. ft)* | 6.6 | 15.5 | 28 | 37 | 122.1 |
| A | 91 | 109 | 138 | 153 | 168 |
| B | 41.5 | 42 | 43 | 43 | 67 |
| C | - | 4.6 | - | 5.6 | - |
| D | 10/12/15H7 | 15/20H7 | 10/15/20H7 | 19.05/20/25H7 | 20/25/30H7 |
| J | 18 | 20 | 20 | 25 | 45 |
| F | 72 | 90 | 112 | 168.3 | 152 |
| G | 3 x M4 | 3 x M5 | 3 x M6 | 4 x M6 | 3 x M8 |
| AA | 91 | 113 | 140 | 185 | 175 |
| Hand Release | - | - | - | Available | Available |
| Ambient Temperature | Minus 20 Plus 60 Degree C | | | | |
| Voltage | Pulse Width Modulation - based on customer requirements | | | | |

* Minimum torque over the life of a brake based on High torque friction. Nominal torque can vary depending on the friction grade selected for the application.

Several options can be customized to fit into your truck. Please contact our specialists.

Continuous R&D provides the market with the best innovations to fit your requirements.

Warner Electric Facilities

North America

USA

31 Industrial Park Road
New Hartford, CT 06057 - USA
860-379-1252

*Electromagnetic Clutches
and Brakes*

449 Gardner Street
South Beloit, IL 61080 - USA
815-389-3771

4578 East Park 30 Drive
Columbia City, IN 46725 - USA
260-244-6183

*Precision Electric Coils and
Electromagnetic Clutches and
Brakes*

Customer Service

1-800-825-6544

Application Support

1-800-825-9050

Europe

France

7 rue de Champfleür - CS20095
49182 St Barthelemy d'Anjou - France
+33 (0)2 41 21 24 24

*Electromagnetic Clutches
and Brakes*

Customer Service

+33 (0)2 41 21 24 76

Application Support

+33 (0) 2 41 21 24 24

Asia Pacific

Australia

+61 2 9894 0133

China

+86 21 5169-9255

Hong Kong

+852 2615 9313

Singapore

+65 6487 4464

Taiwan

+886 2 2577 8156

Thailand

+66 2322 5527



Scan to see all
the brands of
Regal Rexnord

Neither the accuracy nor completeness of the information contained in this publication is guaranteed by the company and may be subject to change in its sole discretion. The operating and performance characteristics of these products may vary depending on the application, installation, operating conditions and environmental factors. The company's terms and conditions of sale can be viewed at <http://www.altramotion.com/terms-and-conditions/sales-terms-and-conditions>. These terms and conditions apply to any person who may buy, acquire or use a product referred to herein, including any person who buys from a licensed distributor of these branded products.

©2023 by Warner Electric LLC. All rights reserved. All trademarks in this publication are the sole and exclusive property of Warner Electric LLC or one of its affiliated companies.