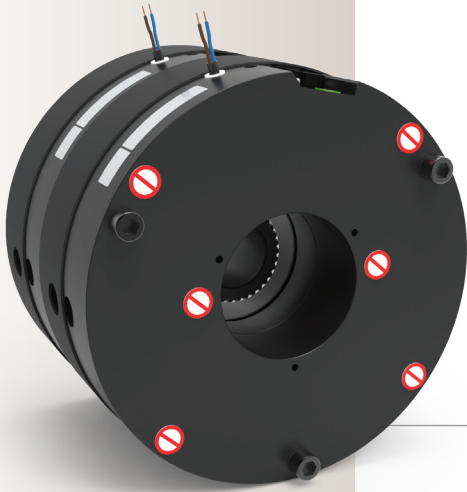


I N T R O D U C I N G

The FENIX 09 Double Brake

Electrically Released Brake
for Stage & Theater Applications



Developed for the Elevator application, the FENIX Brake range offer the most reliable dampening system of the market and can be used during the show without creating any disturbance. Using friction material specifically developed for this application by our own engineers, the **FENIX 09** brake provide a high level of safety for your installation with a full redundancy.

Available in different voltage, the **FENIX 09** brake is equipped with the new Warner Electric Sensor “**WES**” as standard contactless solution to monitor the position of the armature and wear measurement.

Features

- Compact design with torque from 2 x 70Nm up to 2 x 2500Nm
- Double magnet and two friction discs
- Low noise level through the life of the brake (<45dB(A) out of box)
- Speeds up to 3000rpm
- Customization on request
- According to norm requirements
(BGV-C1; DIN 56950-1; EN81-20/50, DGUV §17...)

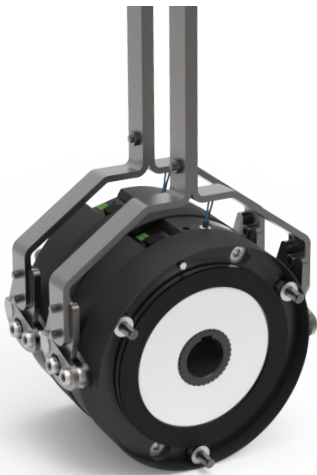
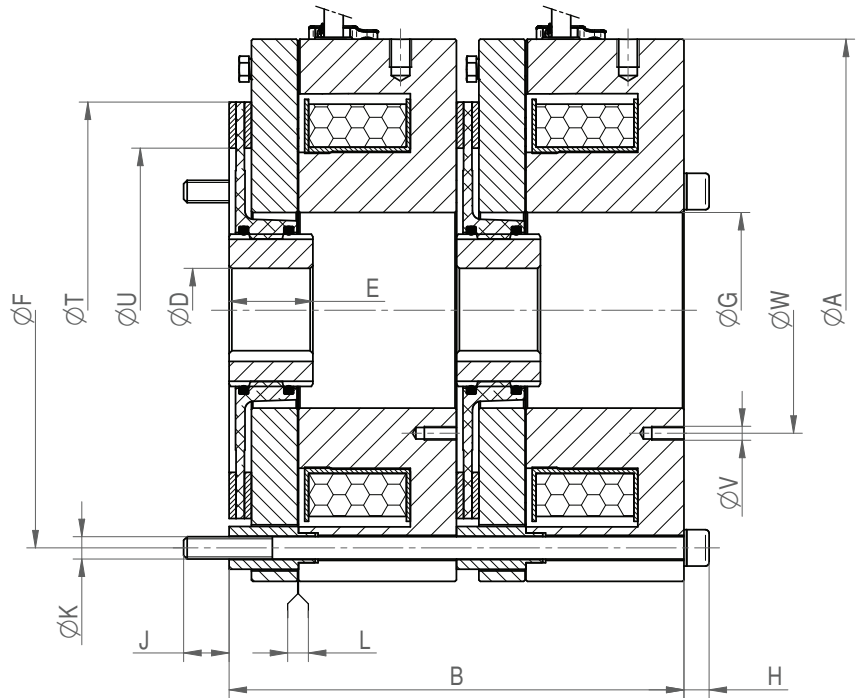
Several options available such as hand release, dust cover, connectors...

This possibility of customization guarantees the perfect fit of our brake in your installation.



FENIX 09 – High Torque Double Brake

Electrically Released Brake



	Size	Unit	01	02	03	06	10	15	23
High Torque	Torque	Nm	2 x 130	2 x 250	2 x 400	2 x 800	2 x 1400	2 x 2000	2 x 2500
	Max. Speed	rpm	1200	1000	800	600	500	400	350
High Speed	Torque	Nm	2 x 70	2 x 150	2 x 200	2 x 575	2 x 1000	2 x 1500	2 x 1700
	Max. Speed	rpm	3000	2800	2200	1900	1500	1400	1200
	ØA	mm	166	194	234	275	332	362	395
	B	mm	152	164	158	198	184	228	250
	ØD H7 (Max.)	mm	32	40	40	45	80	80	100
	E	mm	30	30	30	68	70	70	70
	ØF	mm	145	170	214	250	303	330	360
	ØG	mm	59	70	80	98	145	145	188
	H	mm	9	9	9	14	14	18	18
	J	mm	18	17	23	22	26	32	29
	K	mm	3 x M8	3 x M8	6 x M8	3 x M12	4 x M12	4 x M16	6 x M16
	L ±0.1	mm	0.35	0.35	0.35	0.35	0.4	0.4	0.45
	L Max.	mm	0.6	0.6	0.6	0.6	0.7	0.7	0.7
	Ø T	mm	125	149	194	222	275	296	325
	Ø U	mm	90	116	145	175	230	230	210
	Ø V	mm	4 x M5	3 x M5	4 x M5	3 x M6	4 x M6	3 x M6	3 x M6
	Ø W	mm	75	88	90	112	176	165	220
	Weight	Kg	20	28	44	76	86	138	190
	Lever		Option						