



PK Spring-Applied Motor Brake Captive Design

Electrically Released Brake



Parking and stopping standard brake

The Pan-Cake Captive (PK Captive) range is a pre-assembled on/off dry failsafe electromagnetic brake. This failsafe brake is used for parking and emergency only. The brake uses a high coefficient of friction material and powerful coil to optimize torque in a low profile package. The coil can be linked with a pulse width modulation power supply to reduce power consumption and maintenance.



The benefits of this cost competitive range include; one piece design for easy assembly, lower power consumption, and overall lower maintenance costs.



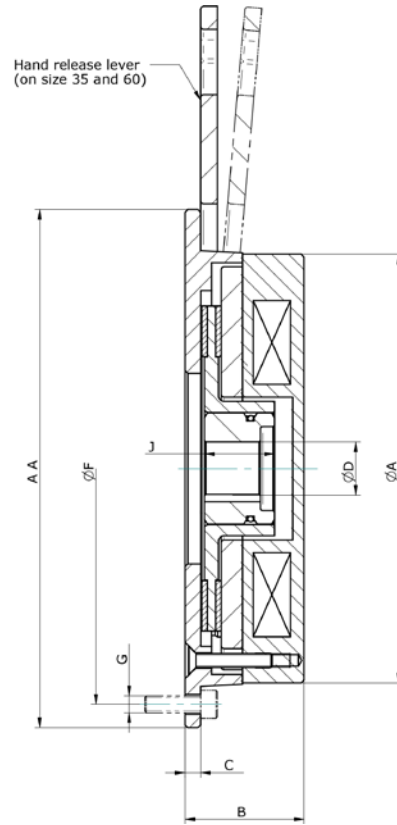
- High torque within a compact space envelope
- Multi-step braking versions available
- Low profile space saving design
- Hand release on request
- IP67 on request
- High quality corrosion protection treatment



For technical assistance call
Europe: +44 1356 60 2000
US: +1 800-825-9050

PK Spring-Applied Motor Brake

Electrically Released Brake



| Size | 10 Captive | 35 Captive | 60 Captive |
|------------------------|---|---------------|------------|
| Static Torque (Nm) | 11 | 37 | 120 |
| Static Torque (lb. ft) | 8 | 27.1 | 88 |
| A | 109 | 153 | 168 |
| B | 42 | 43 | 67 |
| C | 4.6 | 5.6 | – |
| D | 15/20H7 | 19.05/20/25H7 | 20/25/30H7 |
| J | 20 | 25 | 45 |
| F | 90 | 168.3 | 152 |
| G | 3 × M5 | 4 × M6 | 3 × M8 |
| AA | 113 | 185 | 175 |
| Hand Release | – | Available | Available |
| Ambient Temperature | Minus 20 Plus 60 Degree C | | |
| Voltage | Pulse Width Modulation - based on customer requirements | | |
| Connector | On request | On request | On request |