



PK Spring-Applied Motor Brake Captive Design

Electrically Released Brake

Parking and stopping standard brake

The Pan-Cake Captive (PK Captive) range is a pre-assembled on/off dry failsafe electromagnetic brake. This failsafe brake is used for parking and emergency only. The brake uses a high coefficient of friction material and powerful coil to optimize torque in a low profile package. The coil can be linked with a pulse width modulation power supply to reduce power consumption and maintenance.

The benefits of this cost competitive range include; one piece design for easy assembly, lower power consumption, and overall lower maintenance costs.

- High torque within a compact space envelope
- Multi-step braking versions available
- Low profile space saving design
- Hand release on request
- IP67 on request
- High quality corrosion protection treatment

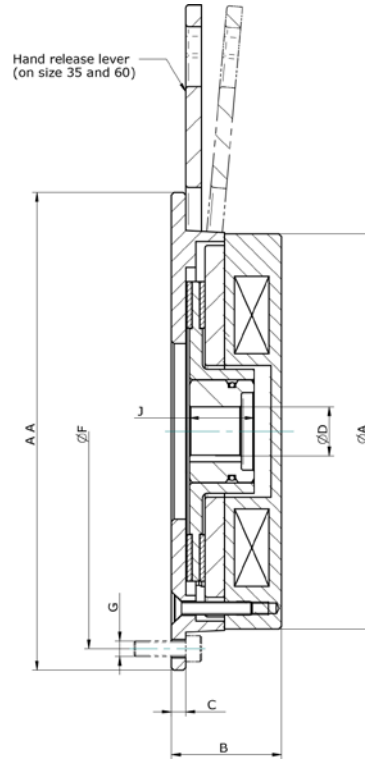




For technical assistance call
Europe: +44 1356 60 2000
US: +1 800-825-9050

PK Spring-Applied Motor Brake

Electrically Released Brake



Size	10 Captive	35 Captive	60 Captive
Static Torque (Nm)	11	37	120
Static Torque (lb. ft)	8	27.1	88
A	109	153	168
B	42	43	67
C	4.6	5.6	—
D	15/20H7	19.05/20/25H7	20/25/30H7
J	20	25	45
F	90	168.3	152
G	3 × M5	4 × M6	3 × M8
AA	113	185	175
Hand Release	—	Available	Available
Ambient Temperature	Minus 20 Plus 60 Degree C		
Voltage	Pulse Width Modulation - based on customer requirements		
Connector	On request	On request	On request