



Wichita Clutches and Brakes provide high speed acceleration and deceleration that are essential in today's process equipment.

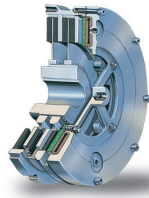
They are available in a wide variety of designs and mounting configurations and are used extensively around the world by leading OEMs in metalworking, steel, pulp/paper, material handling, paper converting, mining, and energy.

### Customer Service & Application Support

1-800-964-3262

[www.wichitaclutch.com](http://www.wichitaclutch.com)

P-1723-6-WC 7/21



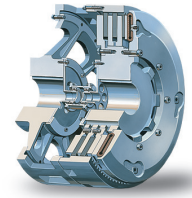
#### Low Inertia Air Tube Disc Clutches and Brakes

Air Tube design provides fast response with smooth engagement. Four clutch combinations; four brake combinations. Low inertia design reduces power consumption and heat build up.



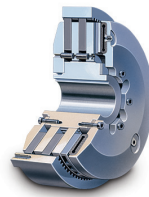
#### CCB Series Clutch/Brakes

These units provide fast, smooth cycling for stamping presses and metal forming equipment by combining a high performance clutch and spring set brake in a compact assembly.



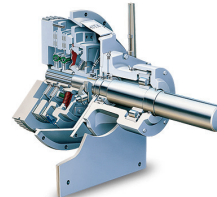
#### Ball Mill Clutches

Ideal for jogging and inching applications, these clutches are specially designed to provide quick, smooth starts with limited current surge for heavy duty grinding mills.



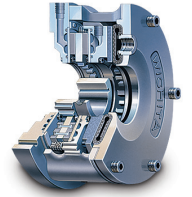
#### Coupling Clutches

The standard vent combination clutch/coupling, unaffected by centrifugal force, is designed for reliable in-line power transmission.



#### Power Take-Off Clutches

Both air tube and mechanically activated PTO's are available in side load and in-line models.



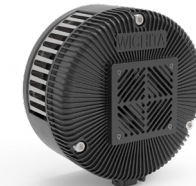
#### Kopper Kool Clutches & Brakes

These units represent the ultimate design for very high heat dissipation in the most rugged tensioning applications including drawworks. Air actuated and water cooled Kopper Kool models feature a copper disc design.



#### AquaMaKKs Brakes

The world's most advanced water-cooled brake features a durable air tube design, water channels for balanced flow, and long-lasting friction material applications including drawworks. Air actuated and water cooled Kopper Kool models feature a copper disc design.



#### Mistral II Air-Cooled Tension Brakes

Specifically designed to meet the demanding tensioning requirements of the corrugated industry, Mistral II brakes provide consistent tension control and faster line speeds.



#### Modevo Air-Cooled Tension Brakes

Modevo brakes provide smooth control at line speeds in excess of 2,000 ft./min. These bi-directional brakes have a high heat dissipation capacity (2.8 - 5 Kw). Torque capacity from 659 lb.ft. to 3,181 lb.ft.



#### Mesur-Fil Fluid Couplings

Designed to deliver reliable smooth power transmission, specifically in a soft start or overload application. Rated for motors up to 50 HP. They provide smooth soft starts while reducing current draw on the motor by 33%.